

Roof Drip Molding Loose

Service Category Vehicle Exterior

Section Exterior Panels/Trim

Market USA

Toyota Supports
 ASE Certification 

Applicability

YEAR(S)	MODEL(S)	ADDITIONAL INFORMATION
2009	Venza	

Introduction

Some 2009 Venza vehicles may exhibit a condition where the Roof Drip Moldings become loose. An improved part has been developed to correct this condition

Figure 1. Standard Roof

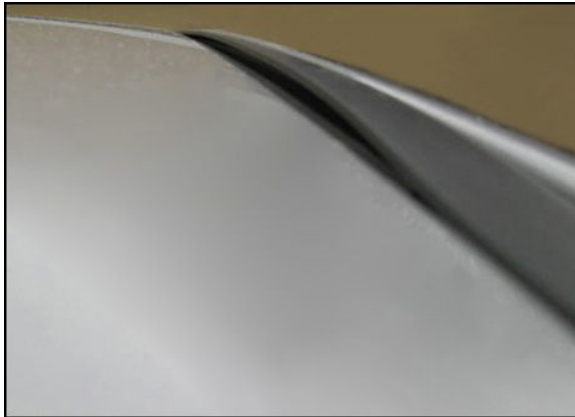
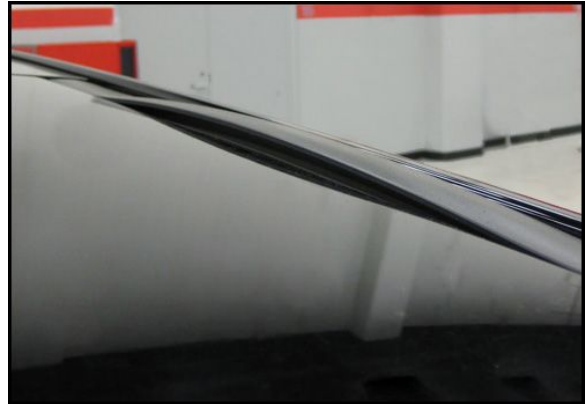


Figure 2. Panoramic Roof



Warranty Information

OP CODE	DESCRIPTION	TIME	OFF	T1	T2
751351	Roof Drip Side Finish Molding (One Side)	0.6	7555#-0T0#0	62	14

APPLICABLE WARRANTY

- This repair is covered under the Toyota Comprehensive Warranty. This warranty is in effect for 36 months or 36,000 miles, whichever occurs first, from the vehicle's in-service date.
- Warranty application is limited to occurrence of the specified condition described in this bulletin.

Roof Drip Molding Loose

Production Change Information

This TSB applies to vehicles produced **BEFORE** the Production Change Effective VINs shown below.

MODEL	ENGINE	DRIVETRAIN	ROOF TYPE	PRODUCTION CHANGE EFFECTIVE VIN
Venza	4cyl	FWD	Standard	4T3ZE11A#9U020025
			Panoramic	4T3ZE11A#9U019932
		AWD	Standard	4T3BE11A#9U009298
			Panoramic	4T3BE11A#9U009279
	V6	FWD	Standard	4T3ZK11A#9U020124
			Panoramic	4T3ZK11A#9U020115
		AWD	Standard	4T3BK11A#9U026093
			Panoramic	4T3BK11A#9U026094

Parts Information

PREVIOUS PART NUMBER	CURRENT PART NUMBER	PART NAME	QTY
75555-0T010	75555-0T011	Molding, Roof Drip RH, Std	1
75556-0T010	75556-0T011	Molding, Roof Drip LH, Std	1
75555-0T020	75555-0T021	Molding, Roof Drip RH with Moon Roof	1
75556-0T020	75556-0T021	Molding, Roof Drip LH with Moon Roof	1
75561-02020	Same	Clip, Roof Drip Molding	4

Required Tools & Equipment

SPECIAL SERVICE TOOLS (SST'S)	PART NUMBER	QTY
Plastic Pry Tool Set*	00002-06000-01	1

* Essential SST.

NOTE
 Additional SSTs may be ordered by calling 1-800-933-8335.

Roof Drip Molding Loose

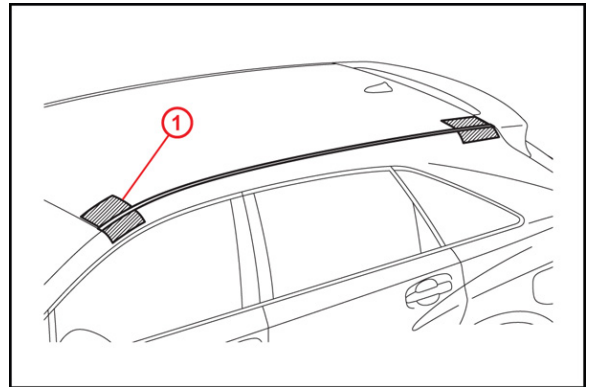
Repair Procedure

Standard Roof Disassembly

1. Remove the roof drip center side finish molding (without sliding roof).

A. Put protective tape around the roof drip center side finish molding.

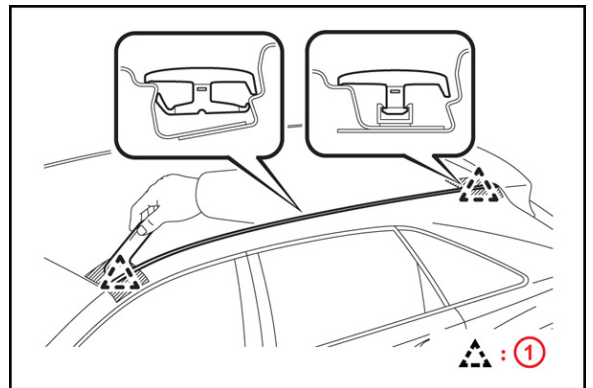
Figure 3.



1 Protective Tape

B. Using a molding remover, disengage the 2 clips and remove the roof drip center side finish molding.

Figure 4.



1 Clips

NOTE

- Do NOT remove the clips.
- If the clips are damaged or separated, replace them with new clips.

2. Remove any dirt, debris, etc. from the channel (all surfaces) and wipe with rubbing alcohol, taking care to prevent any contamination after wiping.

Roof Drip Molding Loose

Repair Procedure (Continued)

Reassembly

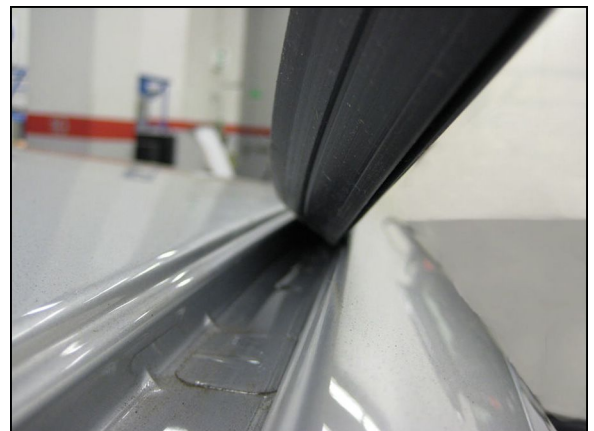
1. Remove the release liner from the front piece of tape.

Figure 5.



2. Set the molding into the front clip.
3. Install the front half of the molding in the channel by setting the outboard edge and lip first, then rotating the inboard edge and lip down into the channel, working from the front toward the rear. Stop just above the middle of the rear door opening.

Figure 6.



Roof Drip Molding Loose

Repair Procedure

Reassembly (Continued)

4. Remove the release liner from the two rear pieces of tape. **Figure 7.**



5. Install the rear half of the molding in the channel by setting the outboard edge and lip first, then rotating the inboard edge and lip down into the channel, working from the front toward the rear.
6. Set the molding into the rear clip.
7. Press down on the tape with 13kg force (29 lbs.). This can be done by hand or by rubber roller. Maintain pressure for at least five seconds.

NOTICE

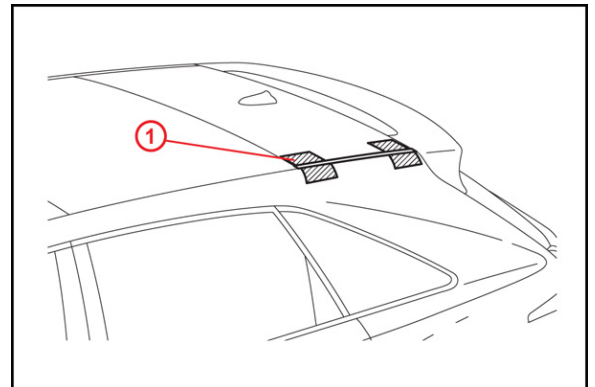
Be careful NOT to damage the top surface of the molding.

Roof Drip Molding Loose

Repair Procedure (Continued)

Panoramic Roof Disassembly

1. Remove the roof drip center side finish molding (with Sliding Roof).
 - A. Put protective tape around the roof drip center side finish molding. **Figure 8.**



1	Protective Tape
----------	------------------------

- B. Using a molding remover, disengage the 2 clips and remove the roof drip center side finish molding.

NOTE

- Do NOT remove the clips.
- If the clips are damaged or separated, replace them with new clips.

2. Remove any dirt, debris, etc. from the channel (all surfaces) and wipe with rubbing alcohol, taking care to prevent any contamination after wiping.

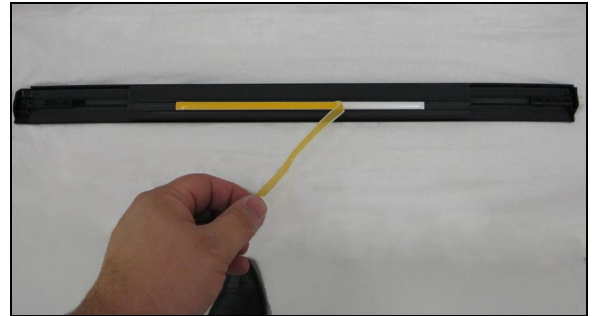
Roof Drip Molding Loose

Repair Procedure (Continued)

Reassembly

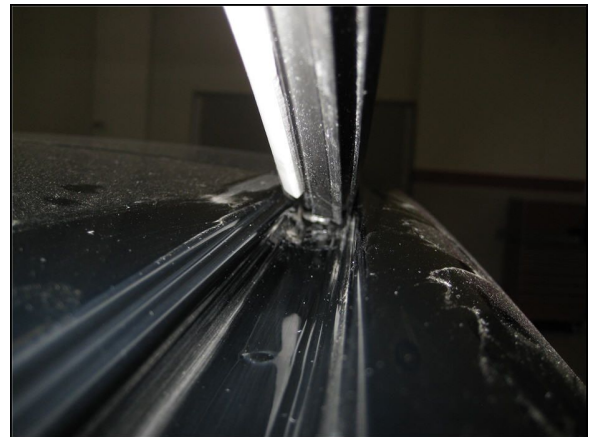
1. Remove the release liner from the tape.

Figure 9.



2. Set the molding into the front Clip.
3. Install the molding in the channel by setting the outboard edge and lip first, then rotating the inboard edge and lip down into the channel, working from the front to the rear.

Figure 10.



4. Set the molding into the rear Clip.
5. Press down on the tape with 13kg force (29 lbs.). This can be done by hand or by rubber roller. Maintain pressure for at least five seconds.

NOTICE

Be careful NOT to damage the top surface of the molding.